



# SCN-V1 Scanner

## Thickness and Flaw Inspection Solutions

The SCN-V1 Scanner is a scanner designed for linear encoded scans with a phased array probe.

The internal encoder wheels are specially designed to resist slippage on wet surfaces and for even better stability on ferromagnetic surfaces, an optional magnetic wheel package is available.

### Features:

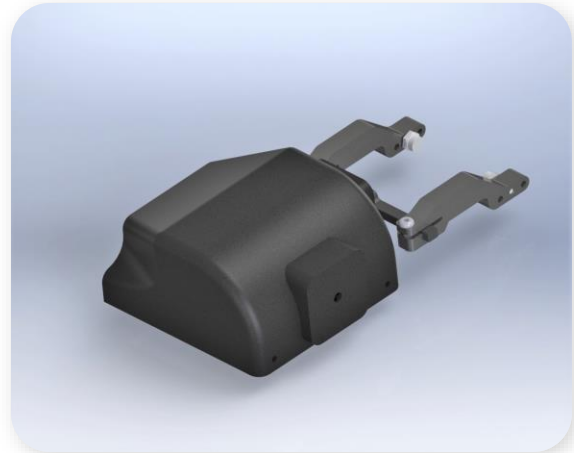
- Encoded linear scan (one axis) for phased array inspection
- Adjustable fork for easy and fast installation of multiple wedge dimensions.
- Two rubber wheels that remain in contact with the surface for maximum adherence.
- An easily clipped and spring-loaded yoke that can be positioned with a 90° skew.
- Durable aluminum body and waterproof construction.

### Applications:

- This simple waterproof versatile scanner is ideal for single-axis UT and phased array inspections including:
- Pipe and vessel welds
- Bolt hole crack detection
- Linear array corrosion mapping
- B and D scan

### Benefits:

- The encoder wheels are specially designed to resist slippage on wet surfaces
- The rugged construction makes this scanner an affordable
- optional magnetic wheel package is available.
- An easily clipped and spring-loaded yoke that can be positioned with a 90° skew.



### Dimensions:

Values are in mm.

